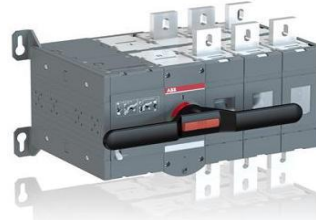


Motorised Change-Over Switches Three Pole Type OTM



Part Number	Frame Sizes	Rated Current AC22A at 400VAC	Rated Power AC22A at 400VAC	Motor Voltage	ZAR Price
1SCA022845R8110	OTM160E3CM24D	160A	110kVA	24VDC	R17 091
1SCA022845R8290	OTM200E3CM24D	200A	135kVA	24VDC	R20 909
1SCA022845R8370	OTM250E3CM24D	250A	170kVA	24VDC	R21 085
1SCA022847R0910	OTM315E3CM24D	315A	215kVA	24VDC	R29 607
1SCA022847R1390	OTM400E3CM24D	400A	275kVA	24VDC	R34 968
1SCA022873R1210	OTM630E3CM24D	630A	435kVA	24VDC	R41 908
1SCA022872R5910	OTM800E3CM24D	800A	550kVA	24VDC	R52 823
1SCA113672R1001	OTM1000E3CM24D	1000A	680kVA	24VDC	R73 589

Accessories Auxiliary contacts (AUX)

Part Number	Frame Size Range	Auxiliary Contacts	Installation Side	ZAR Price
1SCA022353R4970	OTM160 to OTM3200	1 n/o	Right	R229
1SCA022353R4890	OTM160 to OTM3200	1 n/c	Right	R229

Depending on your electrical design, two auxiliaries may be required. One to indicate that the switch is in position I and another to indicate the switch is in position II. A maximum of 8, (4 per switch), auxiliary blocks can be used on the OTM range 160A and above.



Accessories Bridging Bars (3 per Set)

Part Number	Frame Size Range	ZAR Price
1SCA022767R6910	OTM160 to OTM250	R589
1SCA022767R7120	OTM315 to OTM400	R831
1SCA022785R7020	OTM630 to OTM800	R1 730
1SCA022868R0710	OTM1000 to OTM1250	R5 605

Buying bridging bars negates the necessity of building bus bars or making electrical links for a S1, S2, Load system.



Notes:

- * OTM's with 230VAC rated motors are available on request.
- * OTM's with 4 pole option are available on request.
- * OTM's with higher and lower Amperage ratings are available on request.
- * For OTM's, see page 123 in the 2017-2018 ABB Price Catalogue.
- * For auxiliary contacts, see page 129 in the 2017-2018 ABB Price Catalogue.
- * For bridging bars, see page 131 in the 2017-2018 ABB Price Catalogue.